

ANNUAL REPORT 2019

INTRODUCTION

Educational inequality limits life choices, career options and income opportunity. For bright, ambitious students from under-resourced neighborhoods, a college degree represents a clear path out of the crippling cycle of poverty. But this potential is stifled by their circumstances: a lack of exposure and opportunity due to financial, educational, and social inequality. On a mission to right this injustice, YES prepares and empowers students to transcend those boundaries and removes the financial obstacles that would otherwise limit their success. Our long-term holistic support services begin as early as elementary school and continue through high school, college, and career placement. These programs include academic enrichment and counseling, rigorous and expansive summer programming, career readiness workshops, and individualized support as we meet the academic, socio-emotional, and cultural needs of our scholars at every milestone along their journey. Each phase of YES programming develops a set of core skills that we have found essential for our scholars' growth and success. At YES, we strive to level the playing field, providing our scholars with the means to access both crucial and transformative opportunities around the country and the world.

MISSION

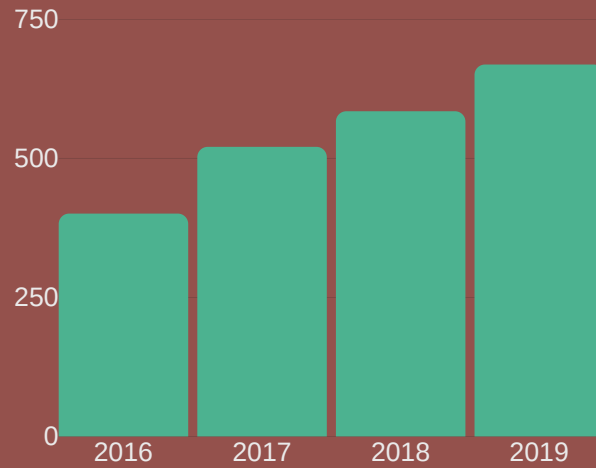
YES identifies promising students from low-income communities in Los Angeles, New York City, Chicago, and rural Appalachian North Carolina, and equips them with the resources, support, and skills required for success through high school, college, and career.

VISION

Dedicated to promoting America's promise of equal opportunity for equal talent, YES works to increase educational access and opportunity for these high achieving students in order to make college and career success an attainable goal. Our long-term holistic support services meet students' needs at every milestone along their journey, beginning in middle school and continuing beyond career placement.



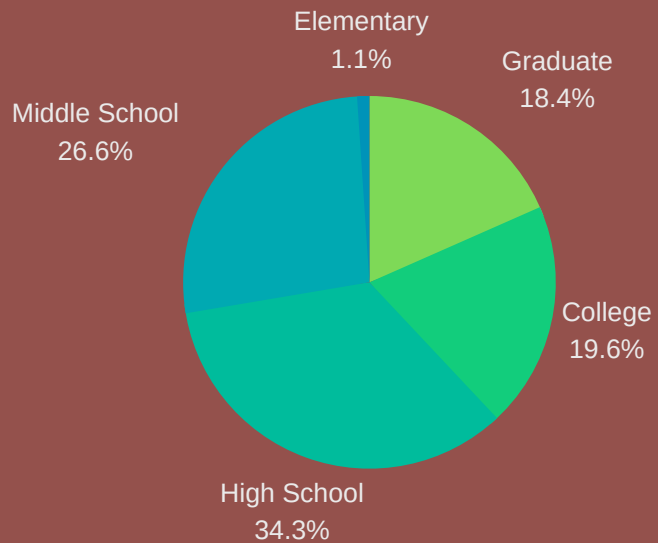
CUMULATIVE STUDENTS SERVED



IMPACT & GROWTH

YES serves scholars across Greater Los Angeles County - from Watts, Inglewood, & the South Bay to East LA, Boyle Heights, & DTLA. We identify scholars from 14 Title I middle schools and currently work with 50 independent and boarding school partners. Last year, the average ACT score for our scholars was 31 -- 11 points above the national average and almost double the average for students from underserved communities. The Class of 2019 will attend 33 colleges in 14 states.

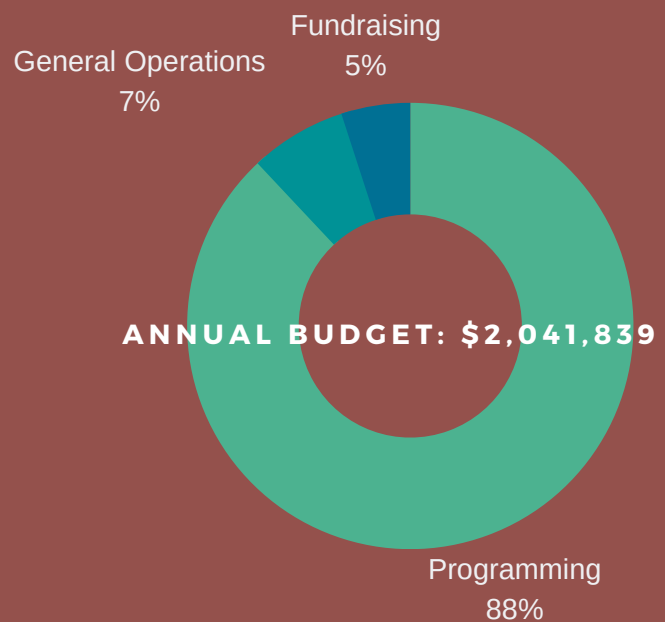
2019 YES SCHOLAR BREAKDOWN





FINANCIAL OVERVIEW

YES spends an average of \$40,000 to financially support a YES Scholar from the 6th grade through college graduation. That amount leverages an additional \$300,000 in financial aid and scholarships from each Scholar's independent school & university.





100%

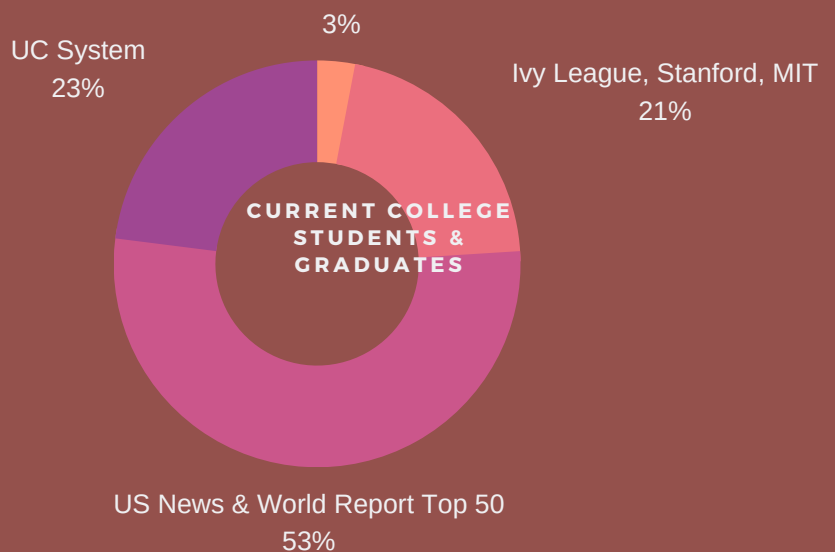
SCHOLARS ACCEPTED TO COLLEGE

93%

SCHOLAR COLLEGE GRADUATION RATE

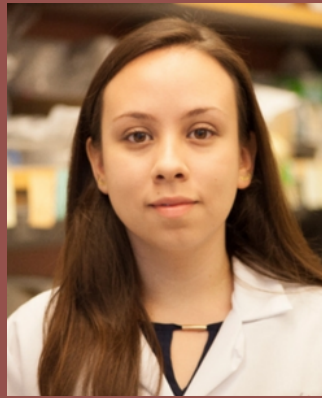
OUTCOMES

Our graduates are excelling in careers spanning every field and are employed at companies including Apple, Morgan Stanley, Google, KPMG, Teach for America, Goldman Sachs, Boeing, UTA, Mercedes Benz, Americorps, Thompson Reuters, Hogan Lovells LLP, Autodesk, The National Park Service, Banijay Studios, Northrop Grumman, & Legendary. YES scholars are attending medical, dental, & law school, as well as a variety of graduate programs across the country.



SUMMER 2019 COLLEGE INTERNSHIPS

- | | |
|--|-------------------------------------|
| Eaton Vance LLP | USC SURE Viterbi Research |
| Morgan Stanley | Yale Free Clinic |
| Zwirner Books & David Zwirner Gallery | Pompeii Ancient Graffiti Project |
| Bank of America/Merrill Lynch | Marmol Radziner |
| Houston Museum of Fine Art | USC Shoah Foundation |
| USC Wrigley Institute | New Jersey - Office of the Governor |
| BEAM (Bridge to Entering Advanced Mathematics) | MIT Research ideas42 |



KAREN GONZALEZ

*Vistamar '13, UCLA '18,
Stanford PhD*

After graduating from UCLA in 2018 with a BS in Molecular, Cell and Developmental Biology, Karen is now in the Stem Cell Biology and Regenerative Medicine PhD program at Stanford University. Her goal is to one day run her own lab and teach as a professor at an academic institution. She has worked with Dr. Roel Nusse studying how liver stem cells lead the organ's development and with Dr. Kyle Loh to make vein and artery cells from human pluripotent stem cells. Currently, she is working with Dr. Kristy Red-Horse, studying how collateral arteries can form after an infarction, in order to return blood flow to the heart muscle.



EFRÉN HERNÁNDEZ

Brentwood '07, NYU Tisch '12

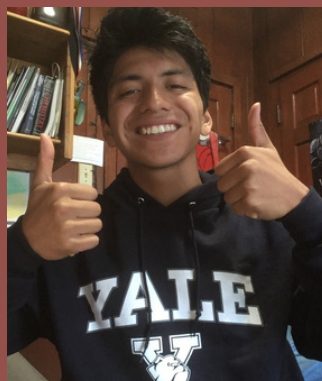
Efrén, current head chef at New York french restaurant, MIMI, was recently profiled in New York Magazine's GrubStreet. Later this year he will open his second West Village restaurant, BABS. A film major at NYU, Efrén recently sold a feature film screenplay to Blumhouse Productions and signed with UTA for representation.



SOPHYA MIRZA

*California Academy of
Mathematics & Science '21*

Sophya was named one of The Mars Generation (TMG) 24 Under 24 Leaders and Innovators in STEAM. The list celebrates young people from around the world who are breaking barriers in science, technology, engineering, arts, and math (STEAM). She hopes to attend MIT and major in Physics and minor in Music.



ABNNER OLIVARES

Cate '19, Yale '23

While at Cate, Abnner's developed a passion for the arts and public policy. He was head of the Creative Writing Club, captain of the Cross Country team, in the advanced choir, a Japanese tutor, head of the Latino Club, and Vice President of the student body. He was the recipient of Cate's Joseph Knowles Foundation Art Award, a Yale Young Global Scholar, and fU of Chicago Hispanic Scholarship Foundation Young Leader. During his summers, he interned at MOCA,, attended Georgetown's ACLU Summer Advocacy Institute and studied in Tokyo. Abnner plans to major in Political Science and Public Policy at Yale.



OUR PARTNERS

YES has prioritizes creating strategic partnerships with other like-minded organizations that share our mission, vision, and values, in order to achieve a greater impact on students from underserved communities around Los Angeles, NYC< Chicago, & NC.

idTech

Google

The Princeton Review

Anthony Green Test Prep

YMCA Camp Whittle

GEAR UP

David Zwirner Gallery

NY Times Summer Academy

Jewish Free Loan Association

Disney

Appalachian State University

Southern California Edison

Scholar Match

Camp Out for Kids

UCLA Unicamp

Teach for America

NPEA

Appalachian Mountain Leadership

Bespoke Education

Summer Institute for the Gifted

Brown Pre-College Programs

Urban Debate League

The Pantheon Institute